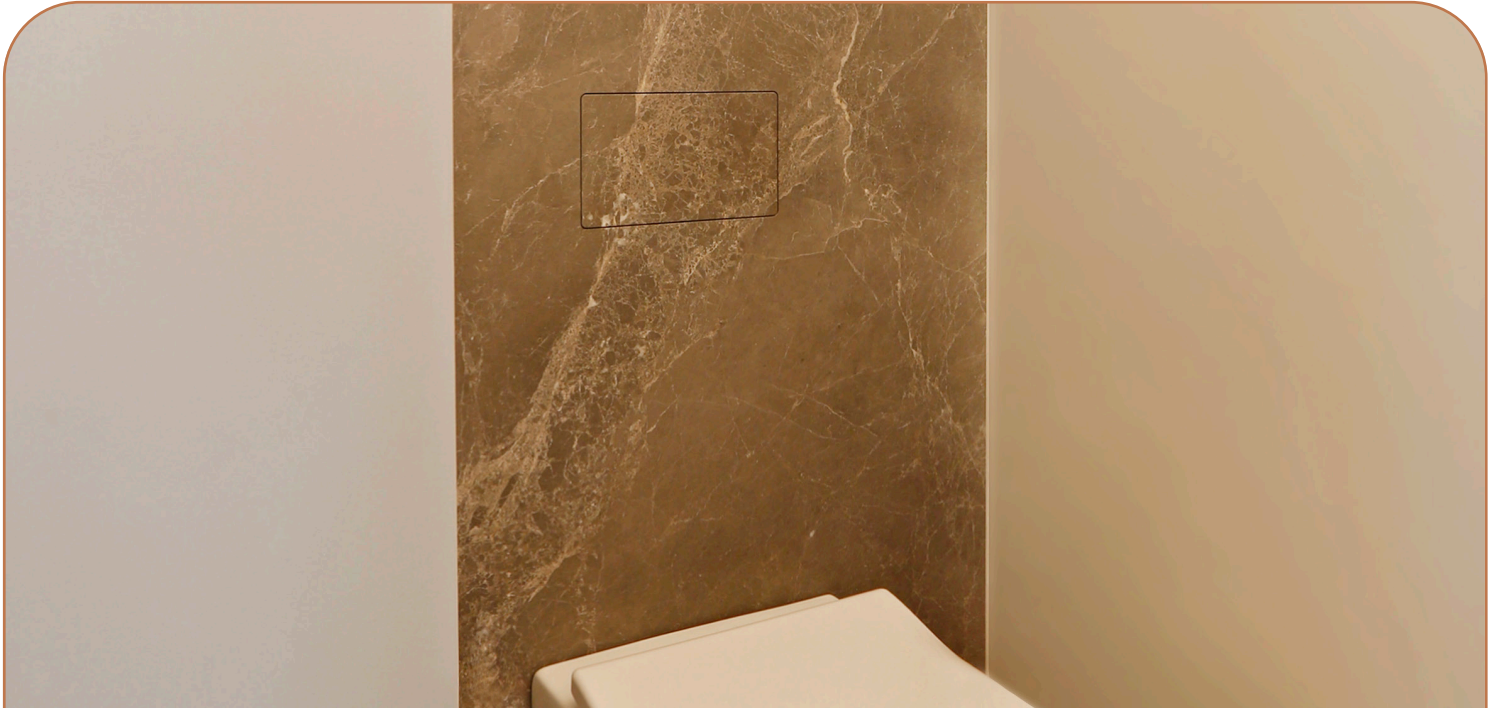


## TECHNICAL DATA SHEET

### UNSEEN FRESH STONE

U1200S



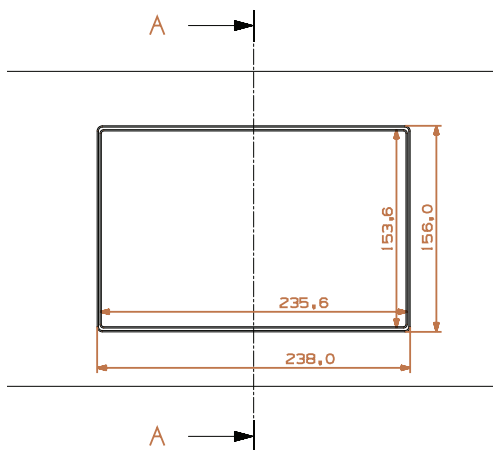
#### Technical specs

Toilet system	Geberit Sigma Series, order separately
Max temperature	60°C
Material	stone, order from stone supplier
Cut out	visible 238mm x 156mm x 16mm [radius 3mm]
Total installation depth	STONE calibrate locally to 16mm** + SYSTEM 37,5mm + TOILET SYSTEM ITSELF (ex. Geberit)

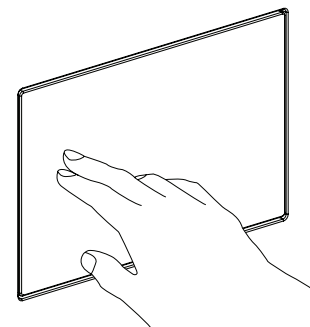
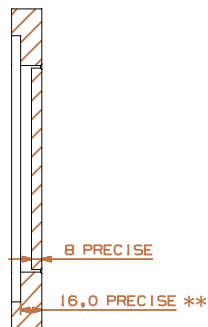
#### Order codes

U1200S	housing for Unseen fresh stone wall <i>(without stone wall nor front plate)</i>
INTINT_GLUEKIT	glue for Unseen system
INTINT_GLUEPISTOL	pistol for gluekit

#### Dimensions



SECTION A - A



## TECHNICAL DATA SHEET

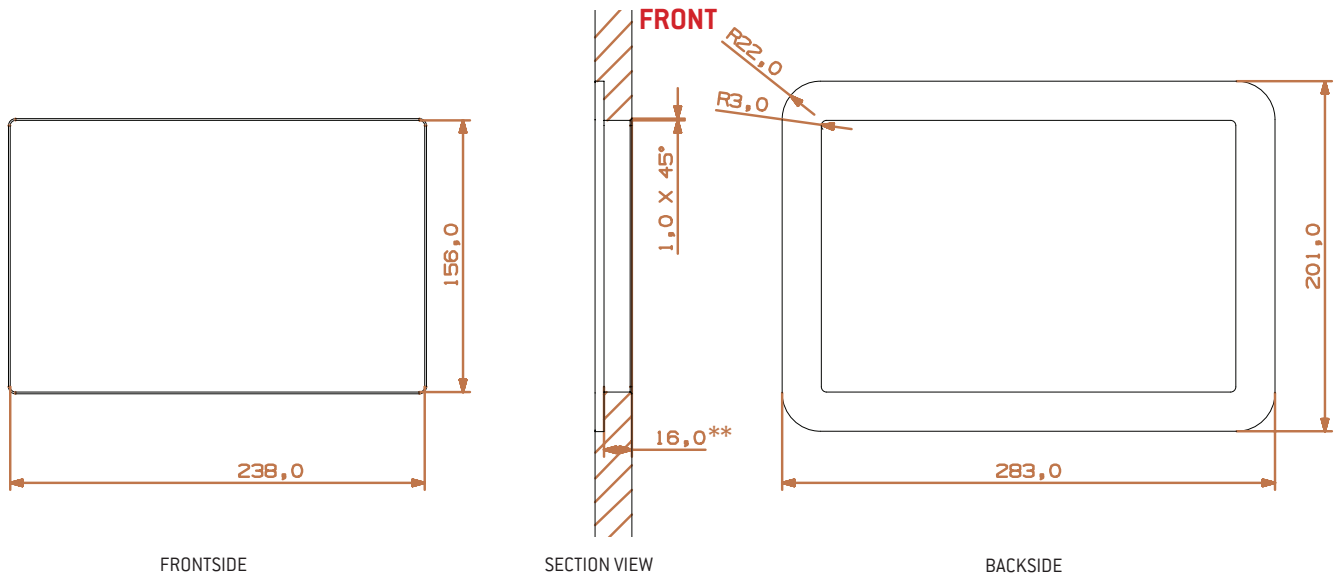
### UNSEEN FRESH STONE

U1200S

#### Installation

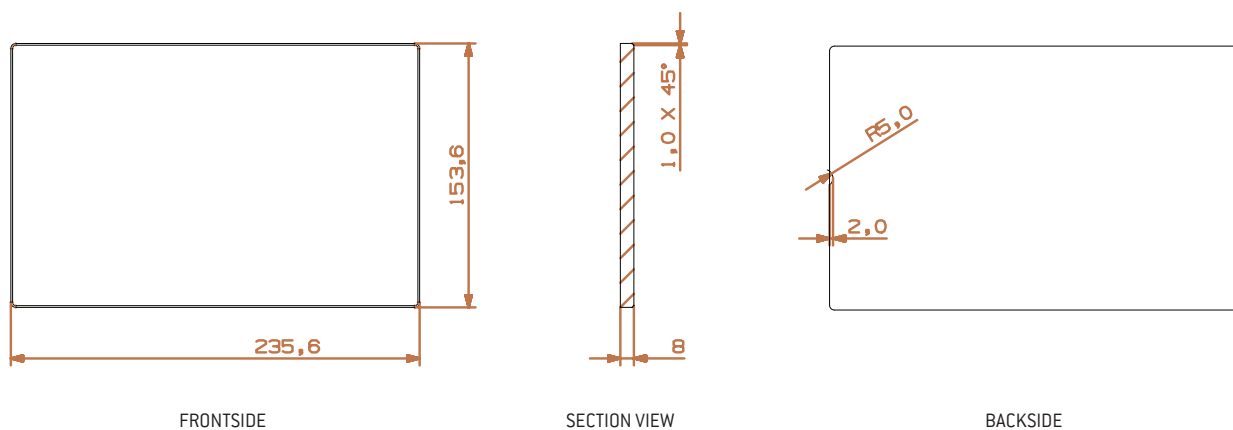
1) Make the cut-out in the stone wall at the right height (center of the opening -> measure on the construction site).

Make the holes for your toilet bowl on the bottom of the stone wall **(Geberit dimensions end of installation manual)**



#### FRONTPLATE

**NOTE:** make sure you know what's the TOP and front-/backside of the frontplate for further assembly as the opattern of the marble is respected.

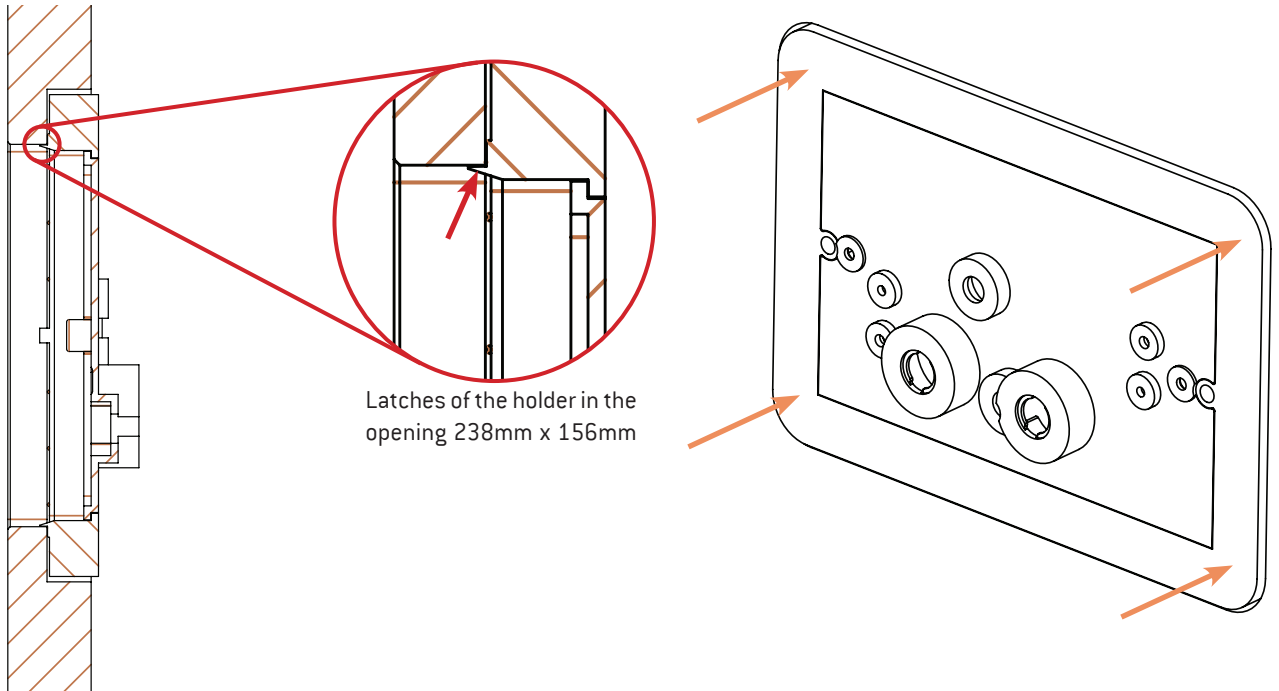


## TECHNICAL DATA SHEET

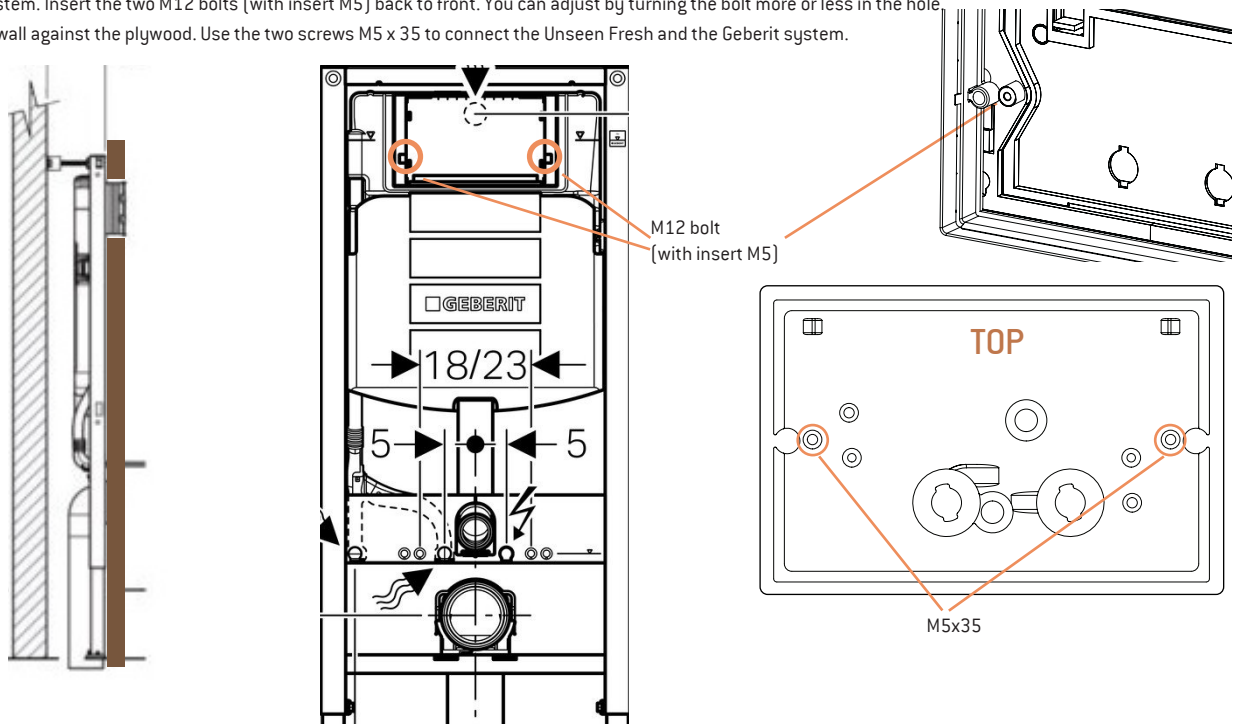
### UNSEEN FRESH STONE

U1200S

2) Install the holder plate of the Unseen Fresh stone system at the backside of the stone opening and glue in place.



3) Attach a plywood plate of 18mm against the Geberit system (for flat installation of the stone wall). Make sure you have a opening (minimum 290 x 210 mm) for the Unseen Fresh system. Insert the two M12 bolts (with insert M5) back to front. You can adjust by turning the bolt more or less in the hole. Install the stone wall against the plywood. Use the two screws M5 x 35 to connect the Unseen Fresh and the Geberit system.



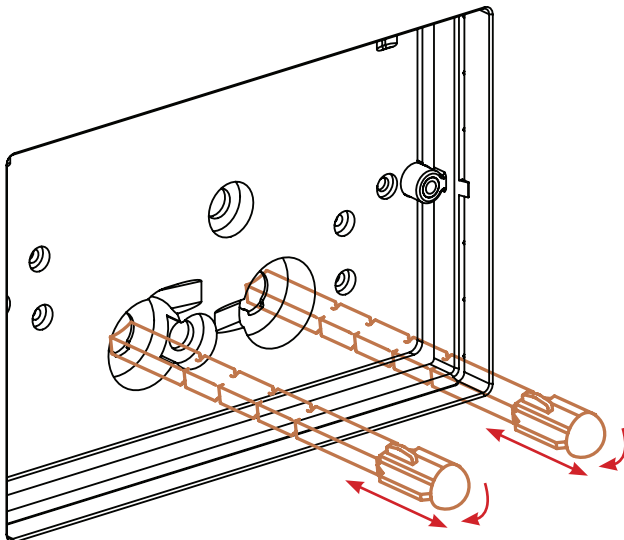
## TECHNICAL DATA SHEET

### UNSEEN FRESH STONE

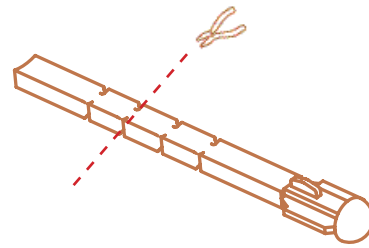
U1200S

4) Insert the two pressure pins inside the holes of the backplate (push and twist with a clear click for proper assembly).

You can adjust the depth relative to the assembled system. If the system cannot be pushed through completely, the back of the pressure pins must be cut off.

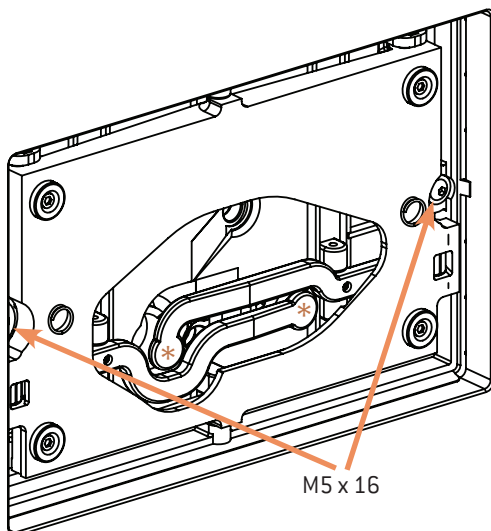


Front view of step 2



5) Screw the assembled system in the holder plate with 2x M5x16.

Make sure the two pressure pins are against the two levers\* of the system.



## TECHNICAL DATA SHEET

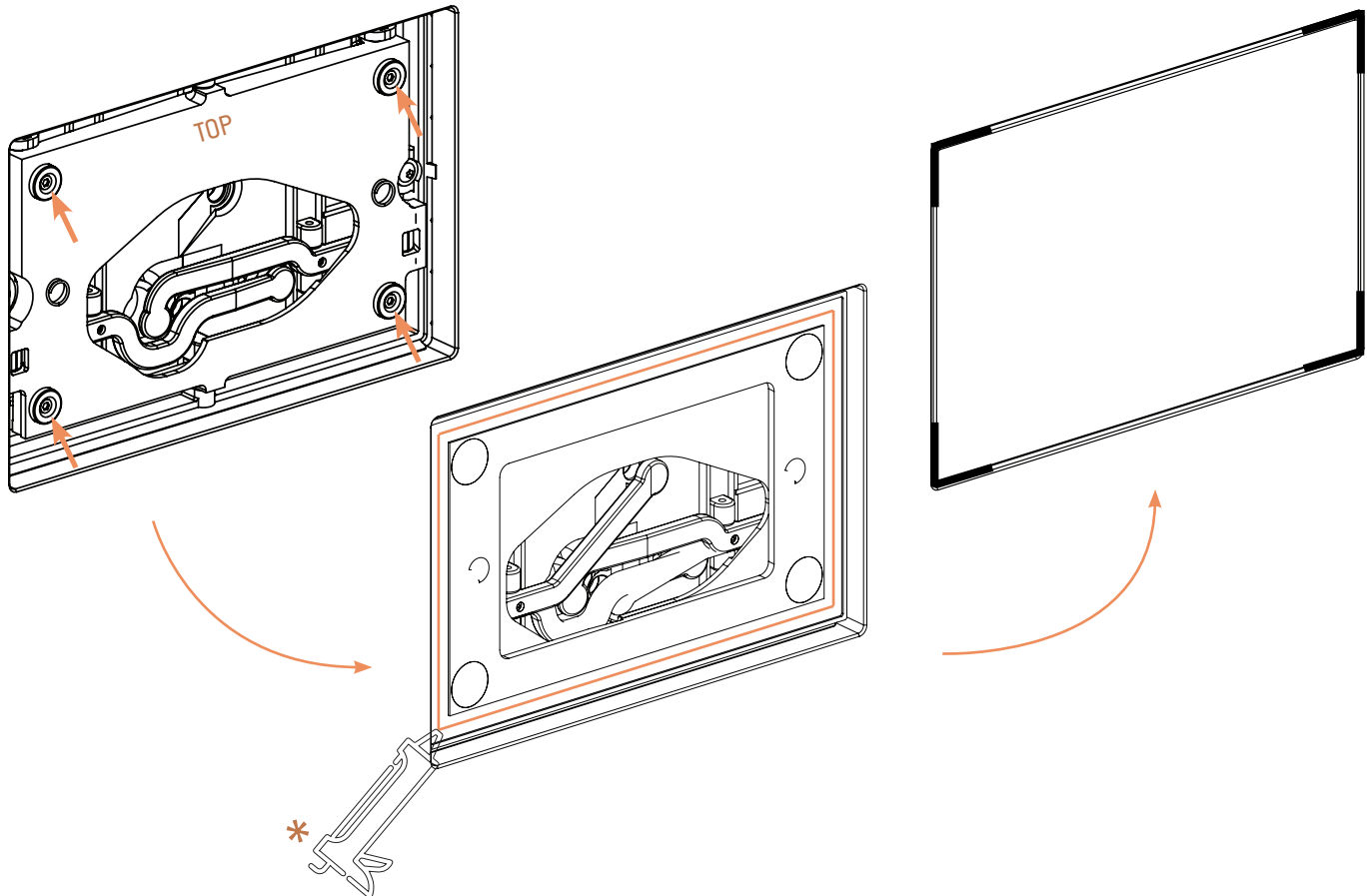
## UNSEEN FRESH STONE

U1200S

6) Click the aluminium plate in the opening. The magnets on the plate system will pull the front plate against the Unseen Fresh stone system.

Apply glue in the channel\*. Take the 8mm thick plate and press it on top of the aluminium plate. You can use the four L-guides to position the front in the middle of the opening.

**NOTE:** make sure the TOP of the stone front is right orientated



## TECHNICAL DATA SHEET

### UNSEEN FRESH STONE

U1200S

#### Geberit Sigma Series dimensions

