

TECHNICAL DATA SHEET

TURNO

C1060



Technical specs

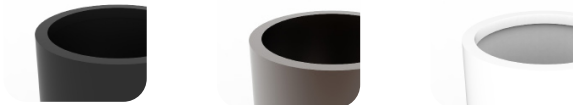
Lamp + fitting	one fitting, Led Module or XILLE50 (only LED)
Control gear	order separately, provide enough space in ceiling
Orientation	fixed downlight
Material	patented composite, paintable
Finish	natural white
Opening	Ø 57 mm
Cut out	plasterboard (PB): 169 x 169 mm concrete (CC): Ø 81 mm
Total installation depth*	plasterboard (PB): 74,5 - 175 mm concrete (CC): 81 - 180 mm

*provide enough space when turning in the housing of the Turno (see figure)

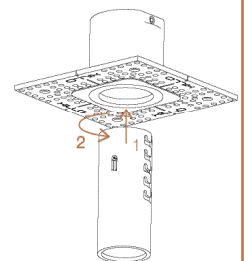
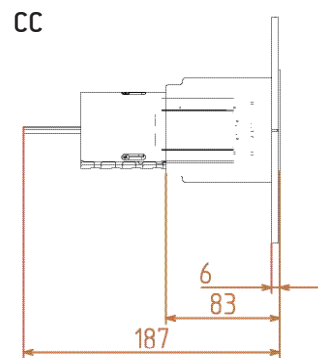
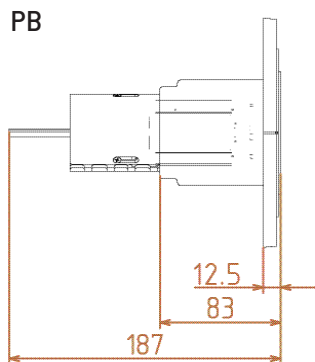
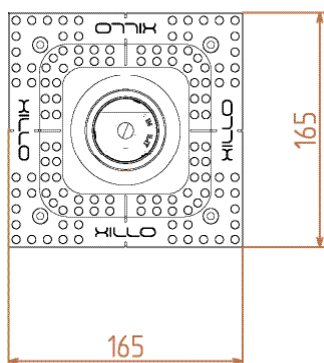
Order codes

C1060 PB	housing for plasterboard ceiling
C1060 CC	housing for concrete ceiling
60TMBL	Turno LED module insert Black (excl. driver)
60TMBR	Turno LED module insert Bronze (excl. driver)
60TMWH	Turno LED module insert White (excl. driver)
60TEBL	Turno insert Black (suitable for Xille50)
60TEWE	Turno insert White (suitable for Xille50)
60TEBR	Turno insert Bronze (suitable for Xille50)
	*Xille50 (230V) not included
60TDBL	Sunset LED module insert Black (excl. driver)
60TDWH	Sunset LED module insert White (excl. driver)
60TDBR	Sunset LED module insert Bronze (excl. driver)

Colours



Dimensions



NOTE: ensure that there is enough clearance for the driver

